



10015 Young Rd
Chilliwack, BC
V2P 4V4

P: 604.792.6612
E: mail@mintergardening.com
W: www.mintergardening.com

Pruning 101

With Doug and Dave Neufeld

The Basics

Bud: A small protuberance of new growth on a stem

Bud Union: The point at which the stems join with the main rootstock

Deciduous: Trees, shrubs or plants that lose their leaves/foliage at the end of the growing season

Espalier: To train branches or vines to grow flat against a wall or trellis, often in the shape of a fan

Evergreen: Trees, shrubs or plants that keep their leaves/foliage year round

Loppers: Long-handled, heavier duty pruners used to cut heavier branches and stems

Pruners: Hand-held shears used for cutting thin branches and stems

Pruning Saw: A curved, hand-held saw used to cut back large limbs and branches

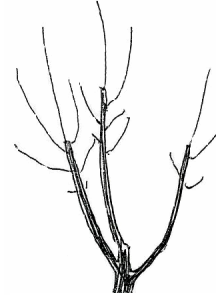
Suckers: New stems that emerge from the roots on woody plants

Deciduous Trees

Thinning: In the first dormant season after planting your tree, completely remove select stems from the bud union, leaving an open center that will allow good air circulation. Thinning cuts reduce the number of new shoots and promote strong growth of the main branches.

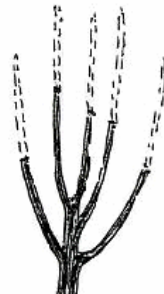


Thinning the first year



Results the second year

Heading: After thinning your tree, remove approximately one third of the stem, from the top, to the nearest bud. Heading increases the number of new shoots formed by an invigorating cut.

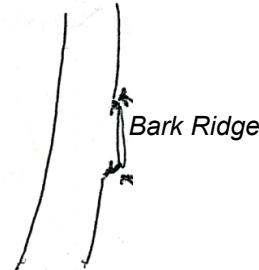


Heading the first year

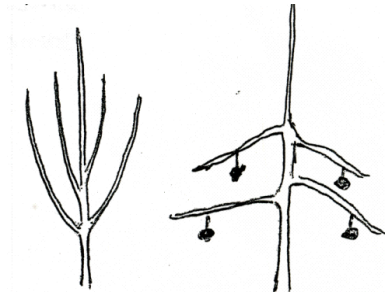


Results the second year

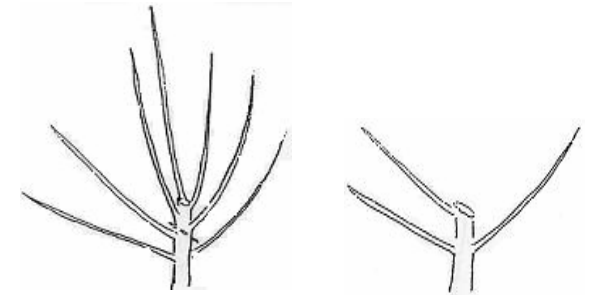
Limb Removal: When removing tree limbs, be sure to remove the limb cleanly, leaving the bark ridge intact.



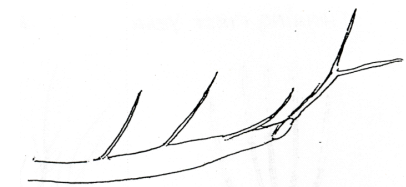
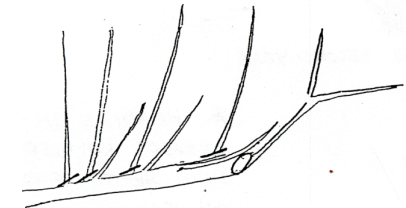
Limb Spreading: Strengthens crotches and brings limbs into earlier production.



Sucker Crowns: These usually occur at the top where growth is strongest. Selectively remove the strongest upright suckers or make one clean saw cut to weaker, flatter shoots, as in the diagram.



Horizontal Limbs: On the top of horizontal branches, remove the strongest, most vertical shoots, leaving weaker, more horizontal shoots. These will absorb growth and come into fruit bearing sooner.





LADIES AND GENTLEMEN... SHARPEN YOUR BLADES!

Tool Sharpening in Chilliwack...

Al's Supply House (p. 604.792.1318, Location: 45732 Yale Rd.)

Cascade Supply & Marine (p. 604.792.1381, Location 46108 Airport Rd.)

Doug's Key Mart & Locksmith Service (p. 604.858.6777, Location: 302-45610 Yale Rd.)

Keeping your tools up to par are an important part of your pruning regime. Clean tools before, during and after with an antibacterial cloth or 10% bleach solution to prevent the spread of disease. Pruning paint can be applied to major cuts as well to prevent problems from developing.

NOTES:

Visit us at www.mintergardening.com for information on Minter Country Garden, our retail garden center (open year-round) and to sign up for our gardening newsletter. Keep up-to-date with all activities taking place at Minter Country Garden by following us on Facebook and Instagram @MinterGardening

